

# Avaya ABT-34/ABT-35

## Bluetooth Headset Systems

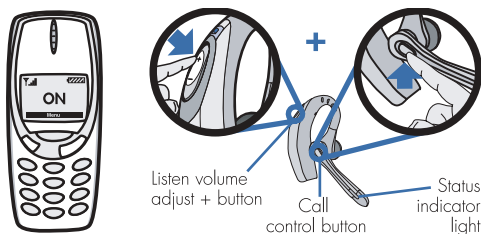
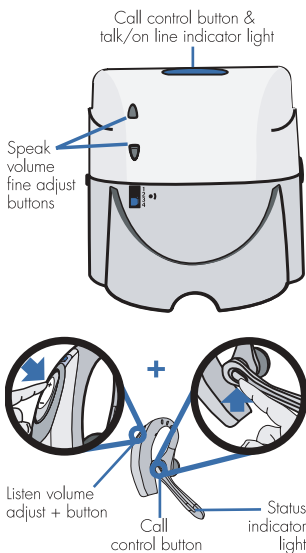
## Pairing

### PAIRING HEADSET AND BASE

The ABT-34/ABT-35 Bluetooth® Headset Systems are supplied with the headset and base unit factory paired to each other. However, if you have purchased a base unit separately, or if you wish to use a replacement headset with your existing base unit, the units must be paired as follows:

1. On the base, press and hold both speak volume fine adjust buttons until the blue talk/on line indicator light and red power indicator light (on the front of unit) start to flash.
2. On the headset, press and hold the listen volume adjust + button and call control button until the status indicator flashes red and blue.
3. Pairing is complete when the talk/on line indicator on base illuminates solidly, and the status indicator light on headset flashes blue.

**Important:** Make sure your headset is not connected to any other Bluetooth device when attempting to pair.



### PAIRING HEADSET AND MOBILE PHONE

Before using your headset for the first time with your Bluetooth mobile phone or device, you must pair it with that device. To pair, follow these steps:

1. Turn on mobile phone. Place headset in pairing mode by simultaneously pressing and holding listen volume adjust button marked + (volume up) and call control button for 2 seconds. When status indicator light flashes red then blue, release the buttons.
2. Use your phone's menu to search for Bluetooth audio devices and select "ABT-35H" when it appears on the display.

**Note:** In some circumstances the pairing process can take up to two minutes to complete.

3. When the phone display asks for a passkey, enter: **0000**. Status indicator flashes blue, once the headset is successfully paired. If pairing fails, try again starting with Step 1.



**0000**